

Example Setbacks: Rails-with-Trails in Massachusetts ...

Ben Bayes
bayesb@gmail.com

Setbacks

Setback

Setback is the distance between the edge of a rail-with-trail and the centerline of the closest active railroad track. The range of setback on existing rails-with-trails **varies considerably, from seven** to 200 feet, with an average of approximately 32 feet.⁵⁹ A comparison of rail-with-trail setback with both train speed and frequency reveals **little correlation**, with some trails **reporting a narrow setback existing along high speed and frequently traveled rail lines.**

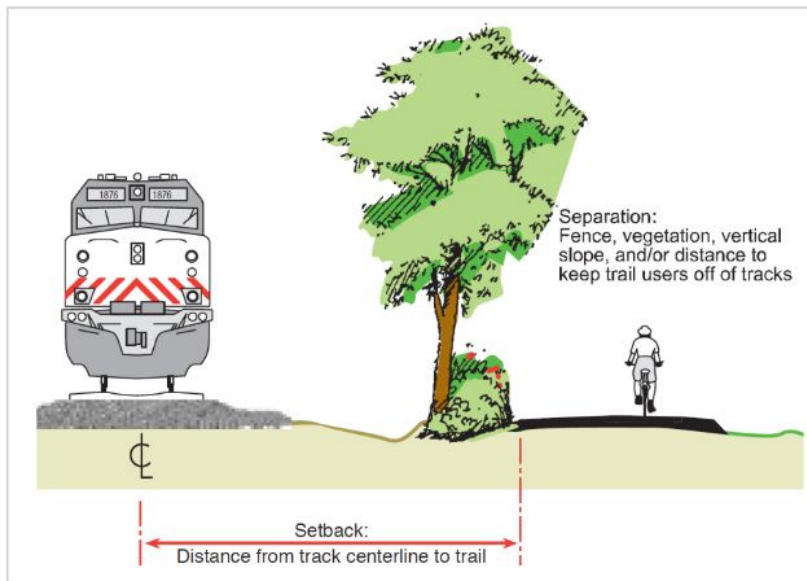
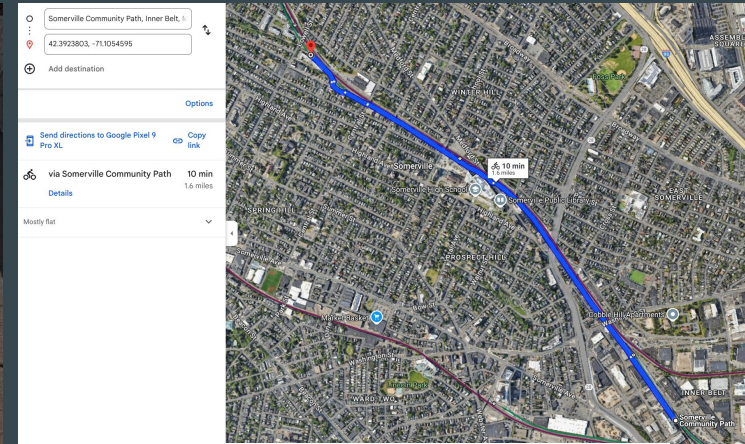


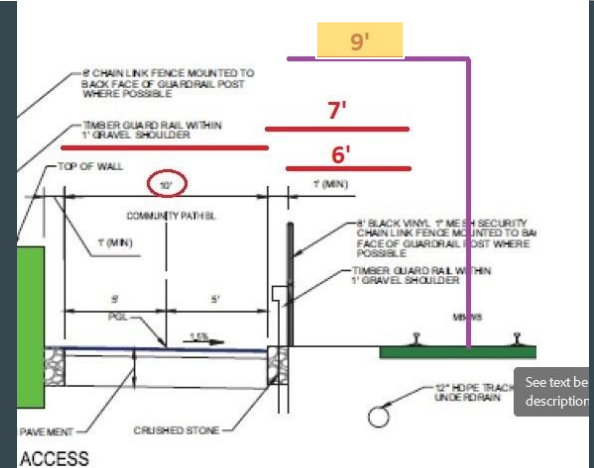
Figure 9: Setback and Separation Definition.

Somerville Community Path Extension

Shared with MBTA Green Line



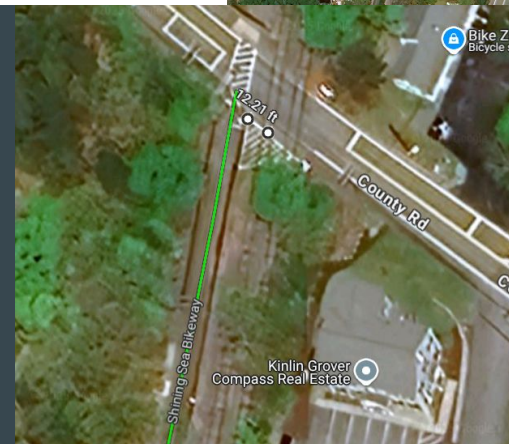
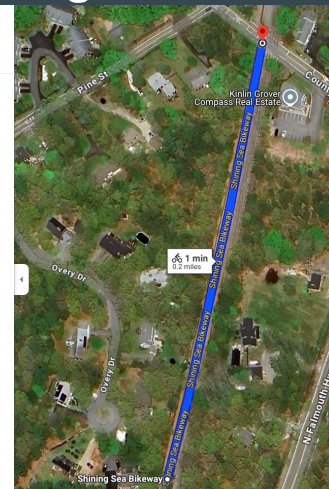
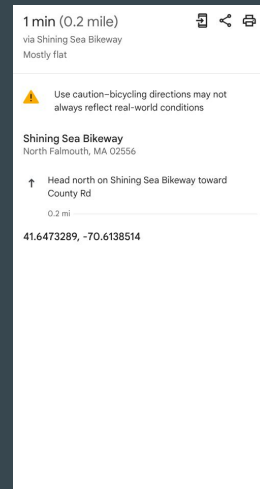
Approximately 1.6 miles of Rwt
Closest **9 feet** setback



Sources: Google Maps, Alan Moore - Friends of the Community Path

Shining Sea Bikeway

Tracks owned by **MassDOT**. Leased to **Mass Coastal Railroad** for Freight Trains

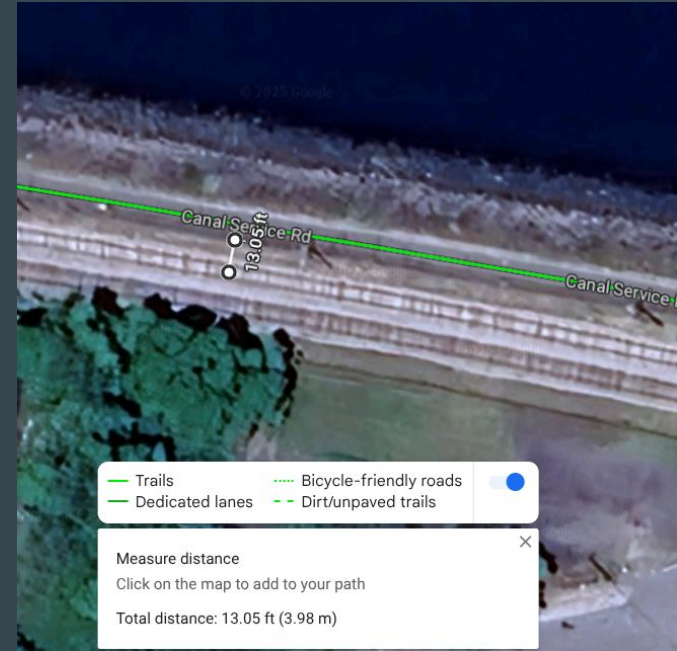


Approximately 0.2 miles of Rwt
Closest **12 feet** setback

Source: Google Maps

Cape Cod Canal Bikeway

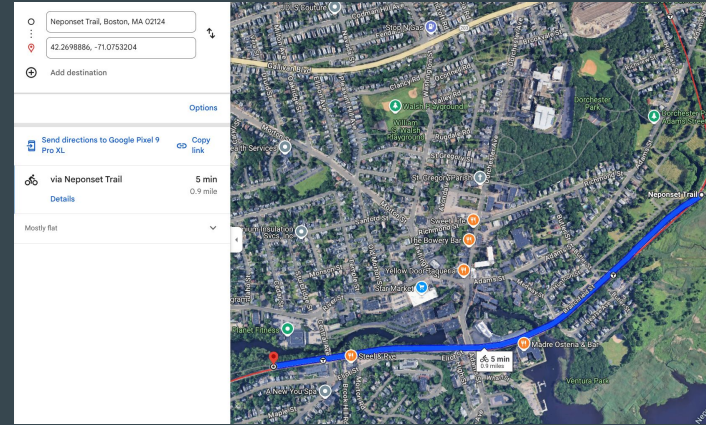
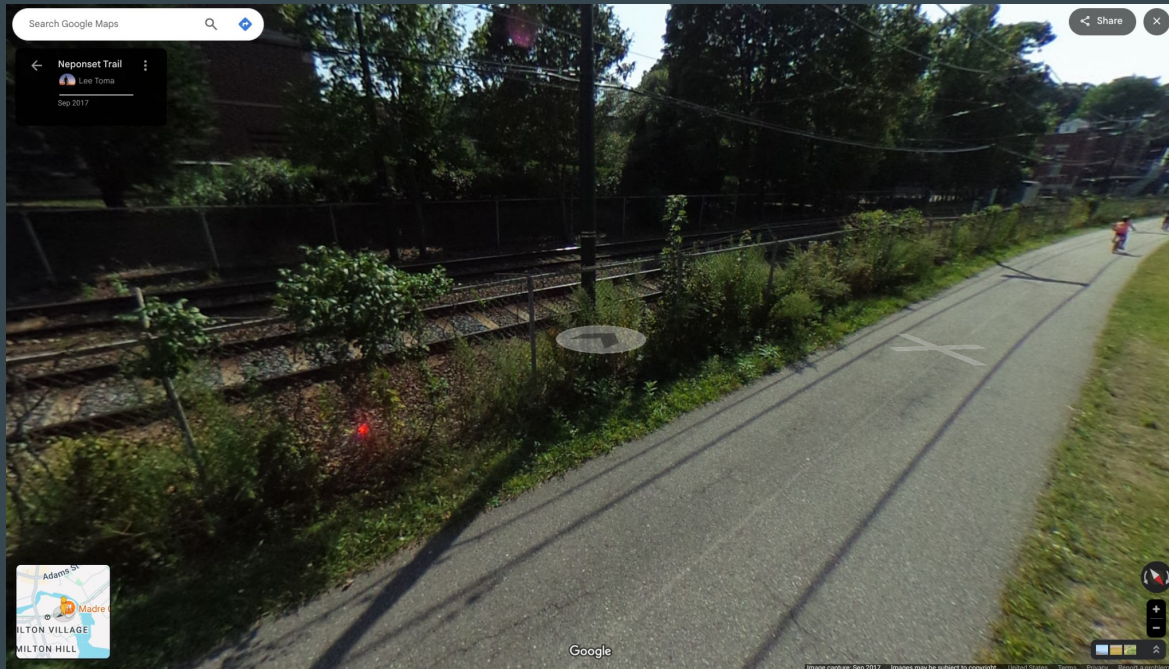
Tracks owned by **MassDOT**. Use: **MBTA CapeFlyer**, leased to **Mass Coastal Railroad Freight**



Multiple short sections of RWT
Closest **13 feet** setback with **NO FENCE**

Source: Google Maps

Neponset River Greenway Shared with MBTA Red Line

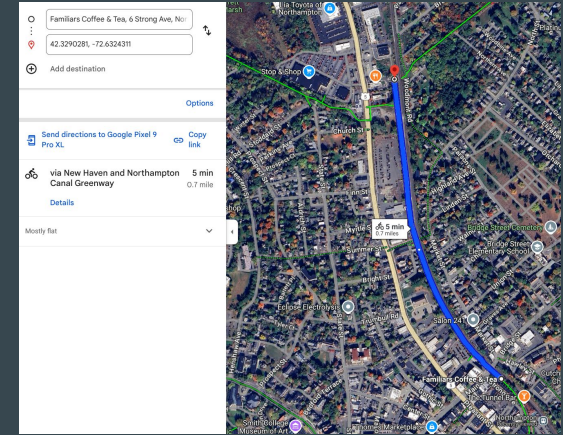


Approximately 0.9 miles of Rwt
Closest **13 feet** setback

Source: Google Maps

Northampton Rail Trail System / Mass Central Rail Trail

Shared with MassDOT Connecticut River Line and Freight Trains



Approximately 0.7 miles of RWT
Closest **13 feet** setback

Source: Google Maps

Google Maps Sources

Somerville Community Path Extension along Green Line Extension	Image	Approximately 12 feet (with fence)	Measure
Shining Sea Bikeway along MassDOT Cape Cod Railroad	Image	Approximately 12 feet (with fence)	Measure
Cape Cod Canal Bikeway along MassDOT Cape Cod Railroad	Image	Approximately 13 feet (NO FENCE)	Measure
Neponset River Greenway along MBTA Red Line	Image	Approximately 13 feet (with fence)	Measure
Northampton Rail Trail System along MassDOT Connecticut River Line	Image	Approximately 13 feet (with fence)	Measure
Belchertown Greenway along New England Central Railroad	Image		
Mass Central Rail Trail - Wayside in Waltham along MBTA Fitchburg Line	Image		
Belmont Community Path in Design	Image		
Connecticut Riverwalk and Bikeway (Springfield)	Image		
Salem Bike Path along MBTA Newburyport/Rockport Line	Image		
Southwest Corridor Park (Boston) along Orange Line, Grade Separated	Image		
Beginning of Whiskey Spur Rail Trail (Cohasset)	Image		
Blackstone River Greenway (RI)	Image		